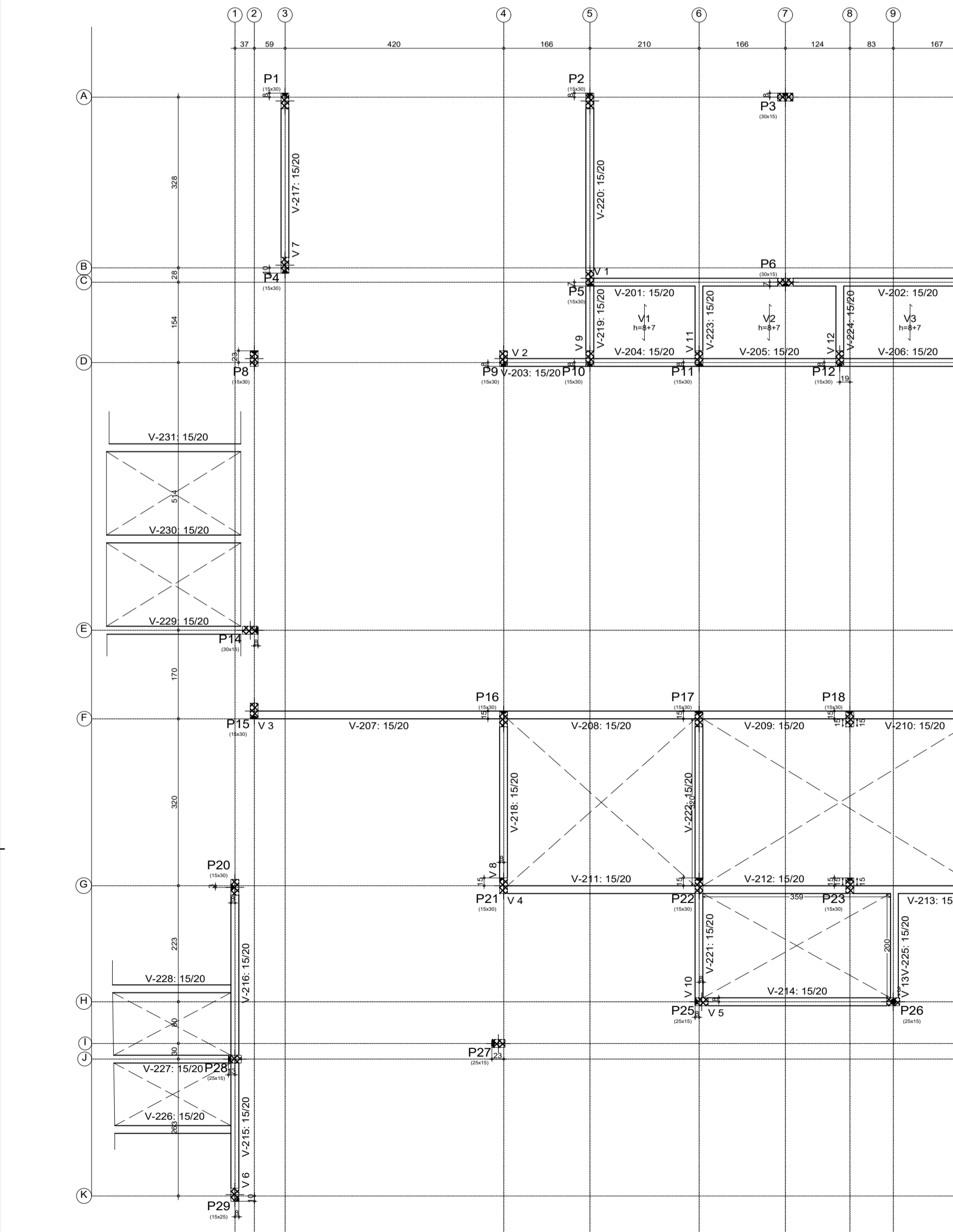
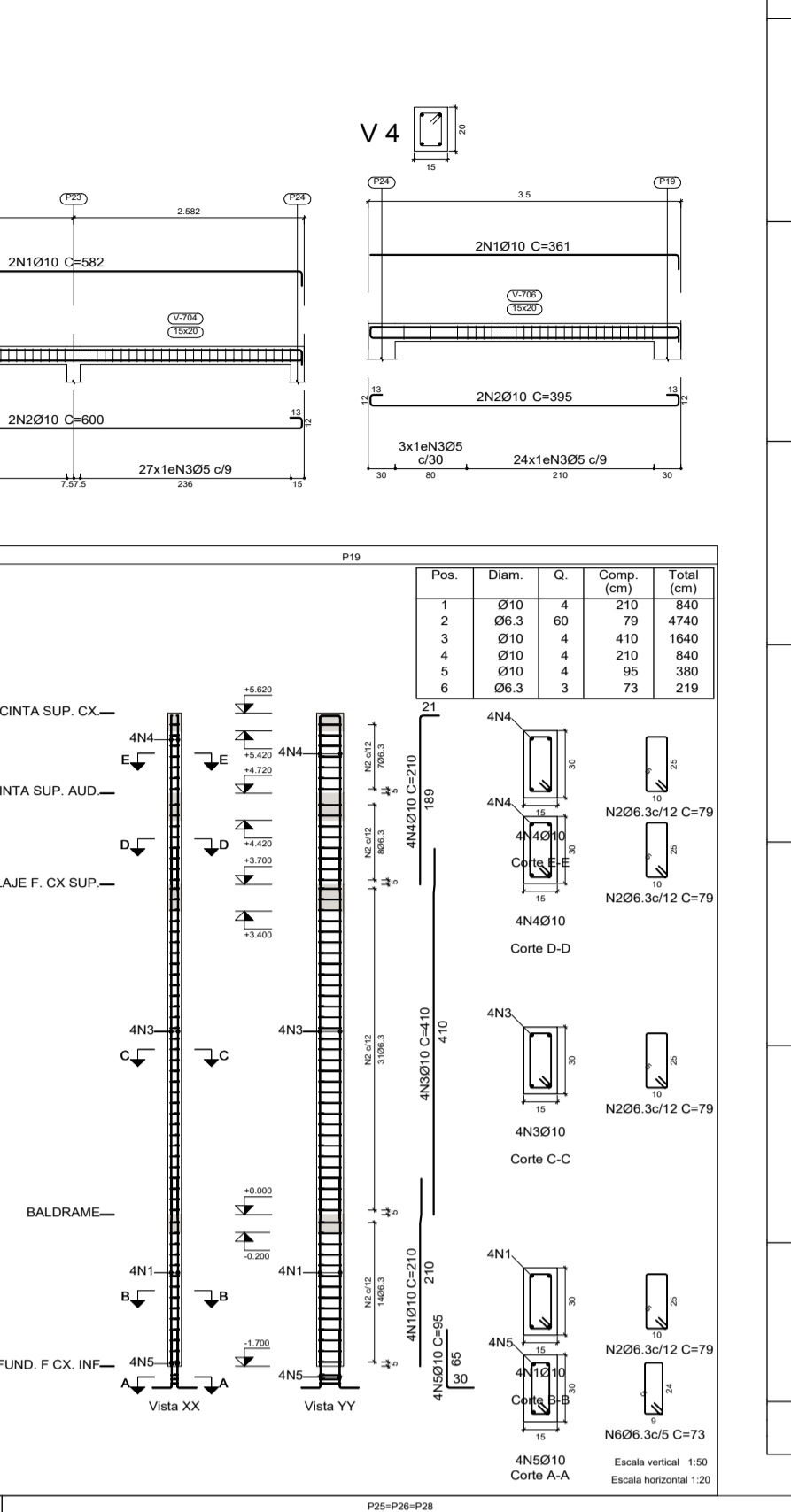
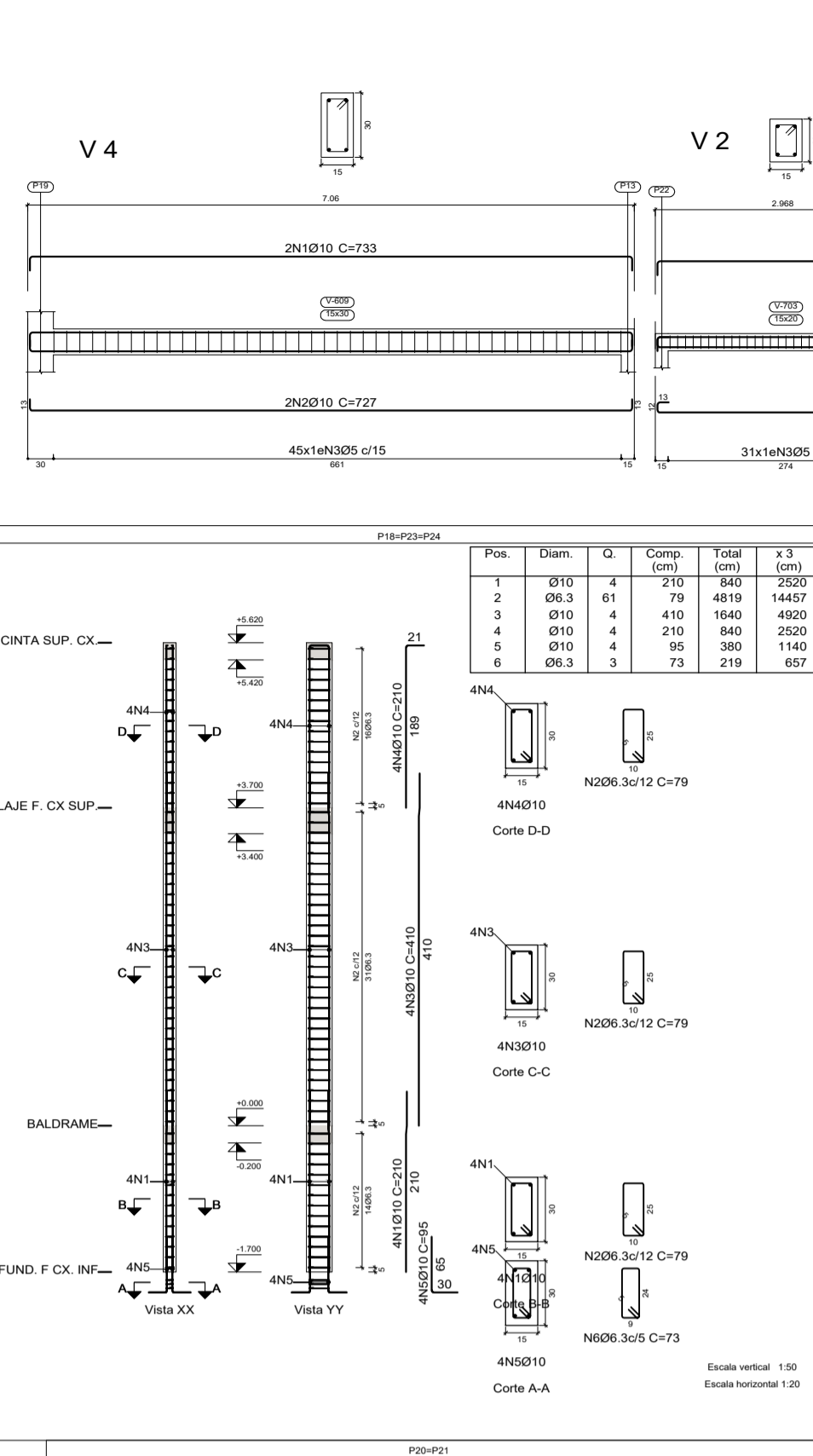
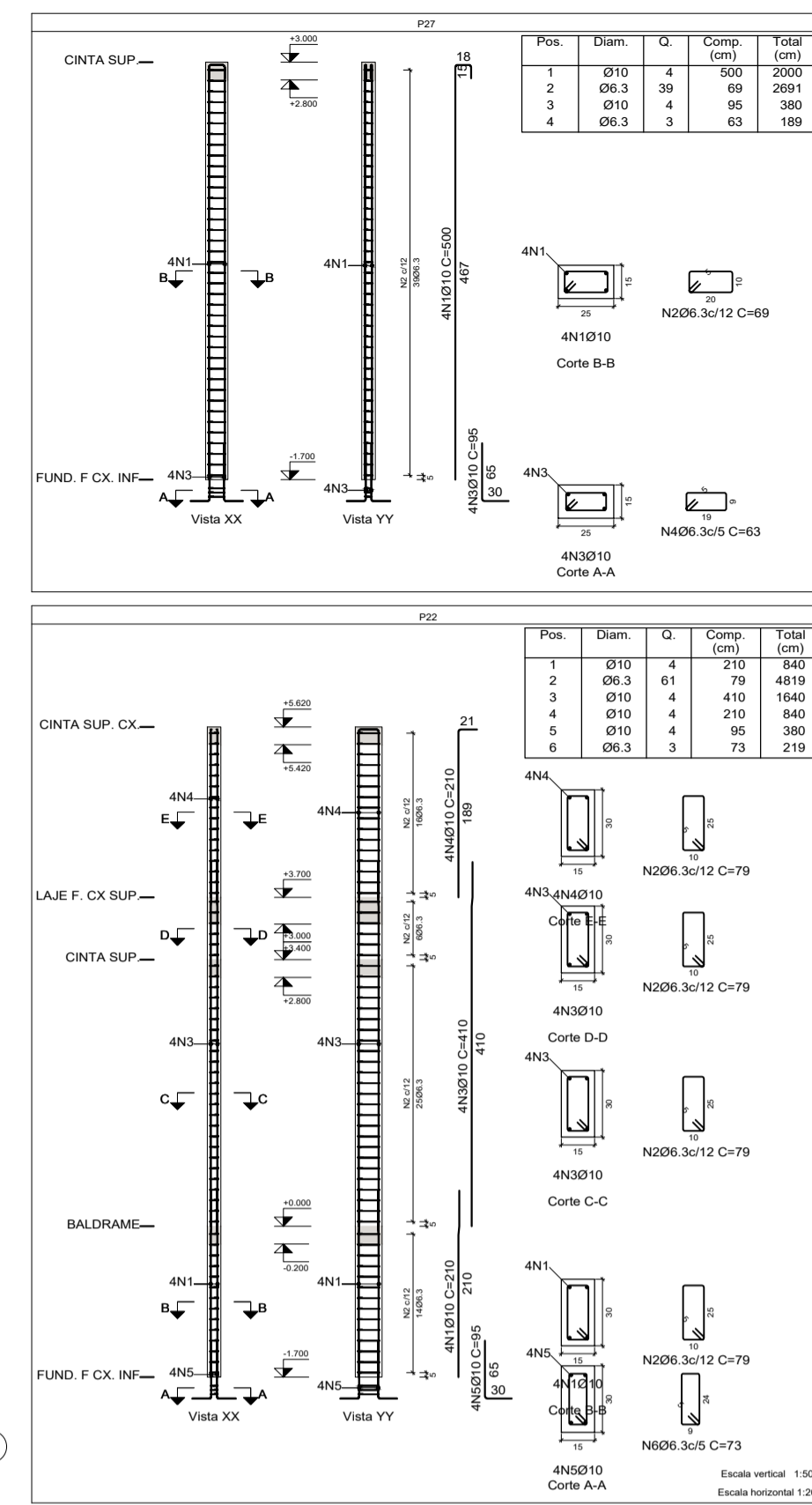
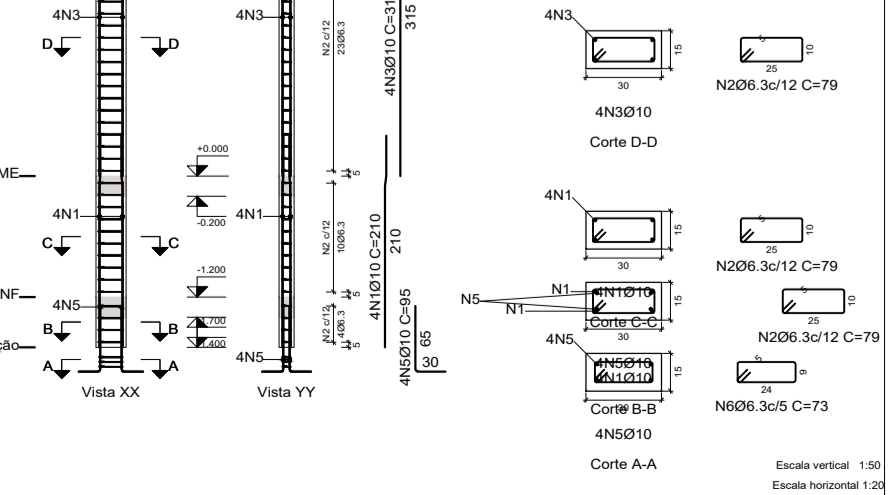
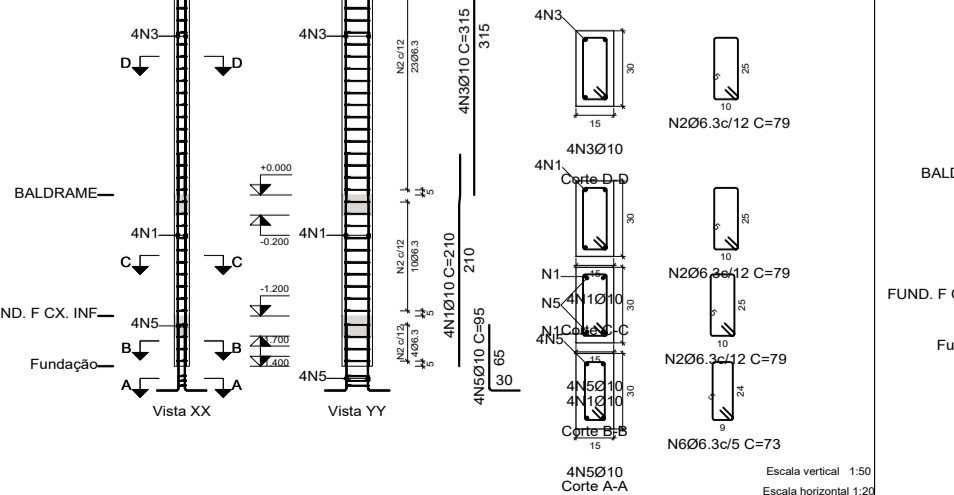
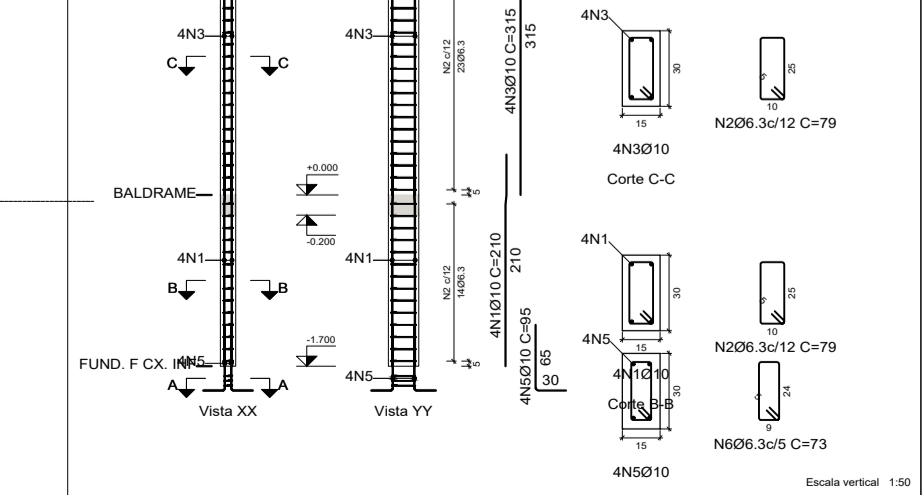
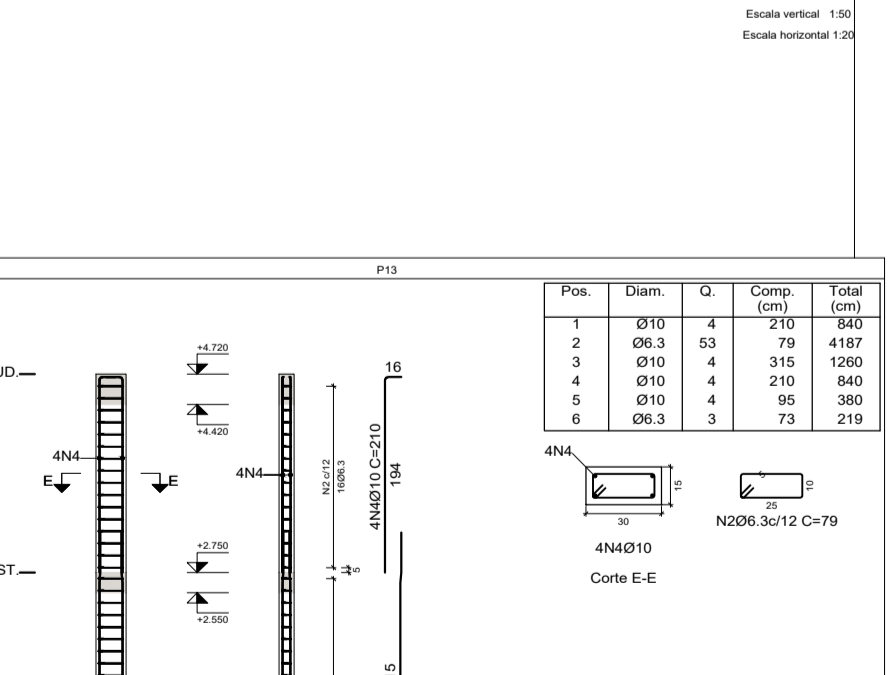
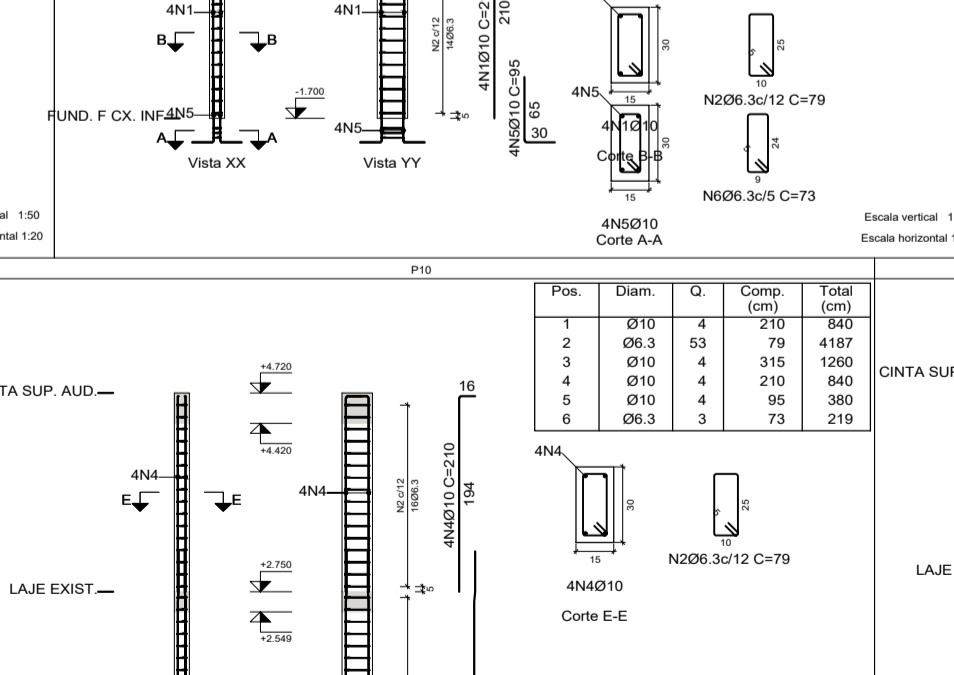
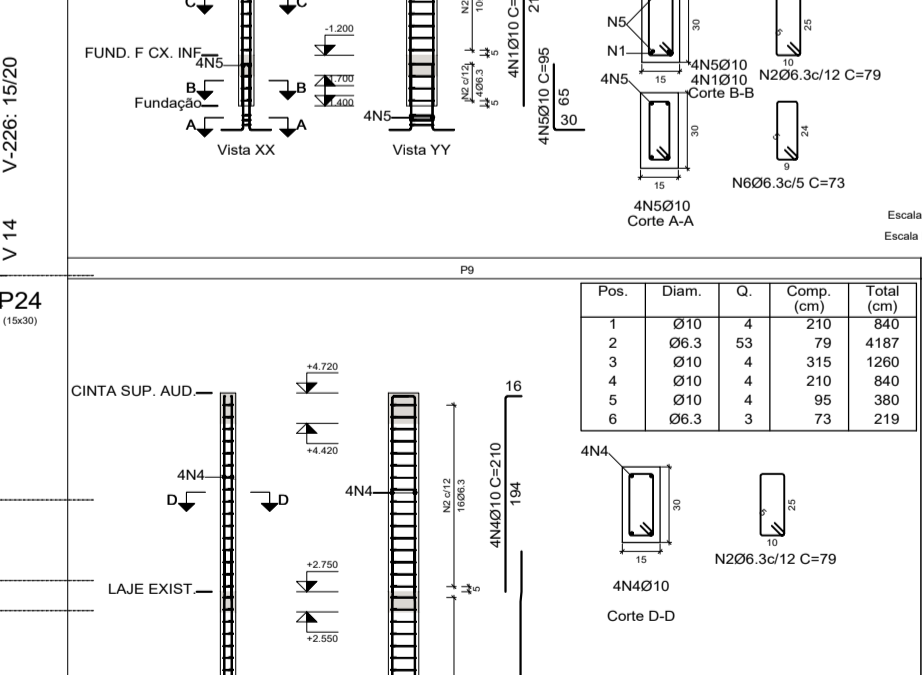
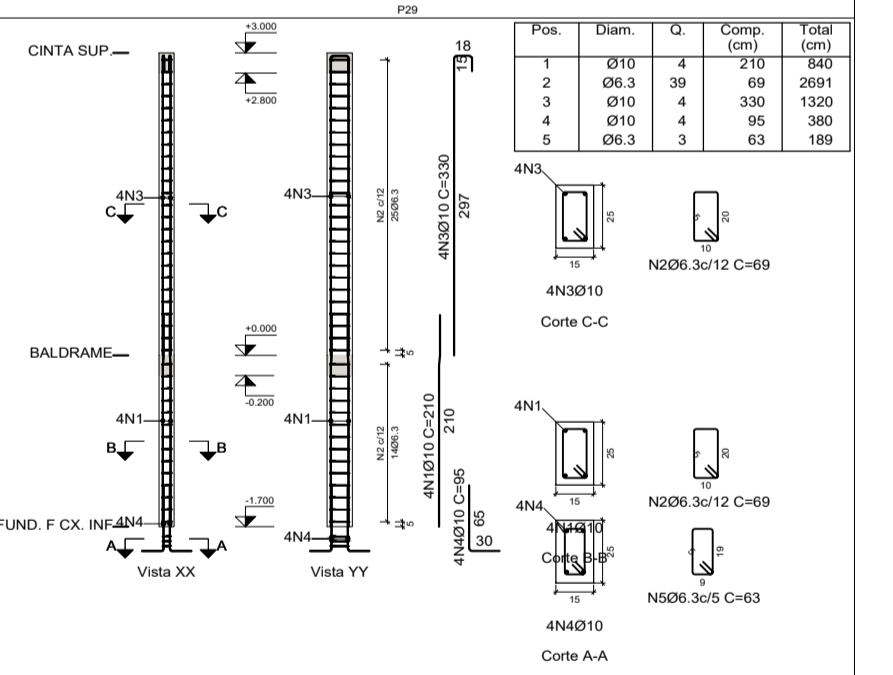
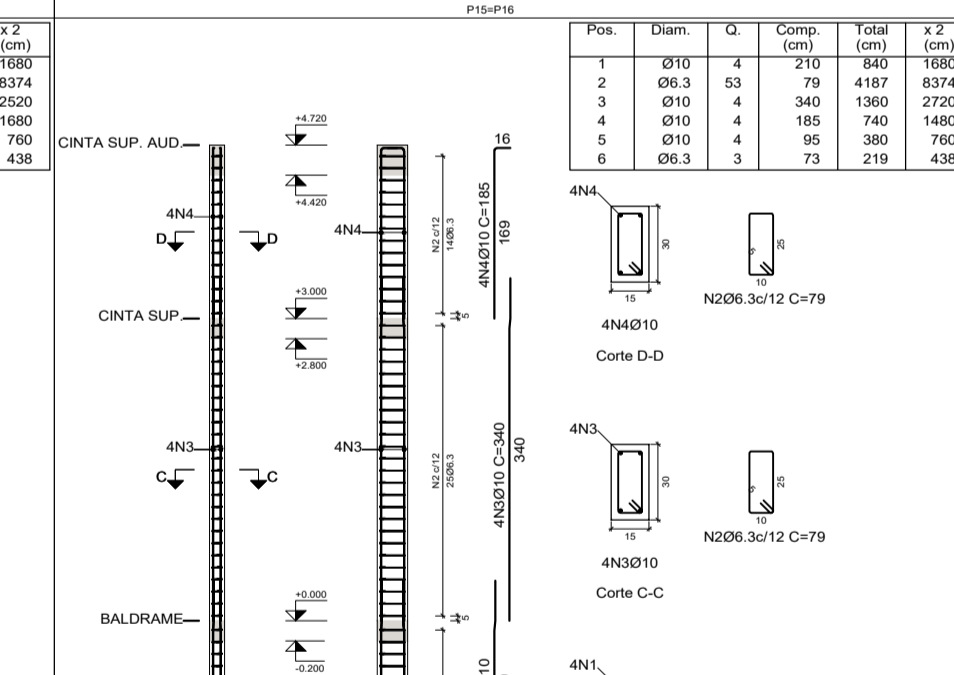
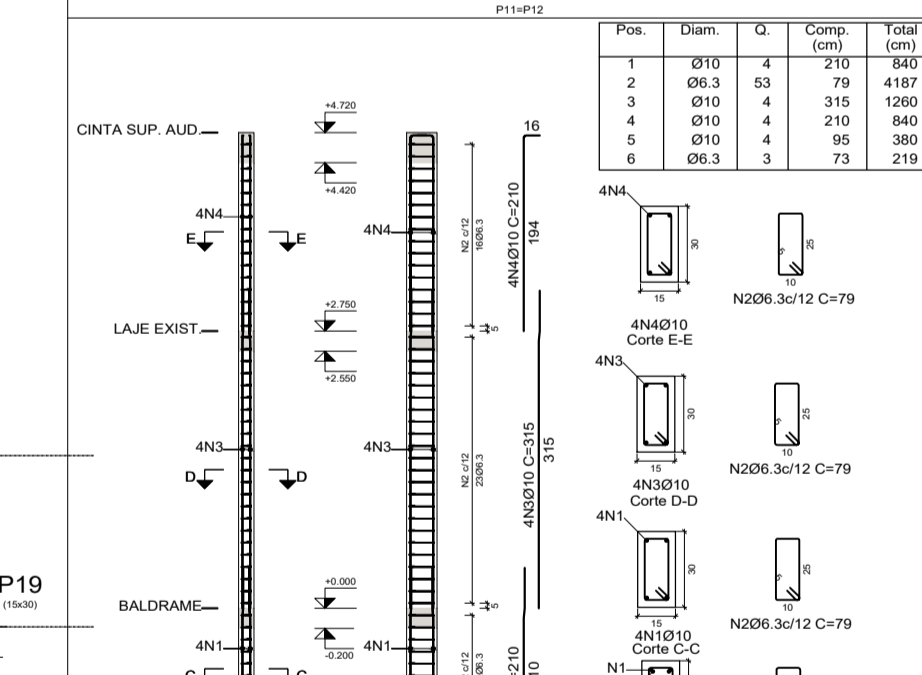
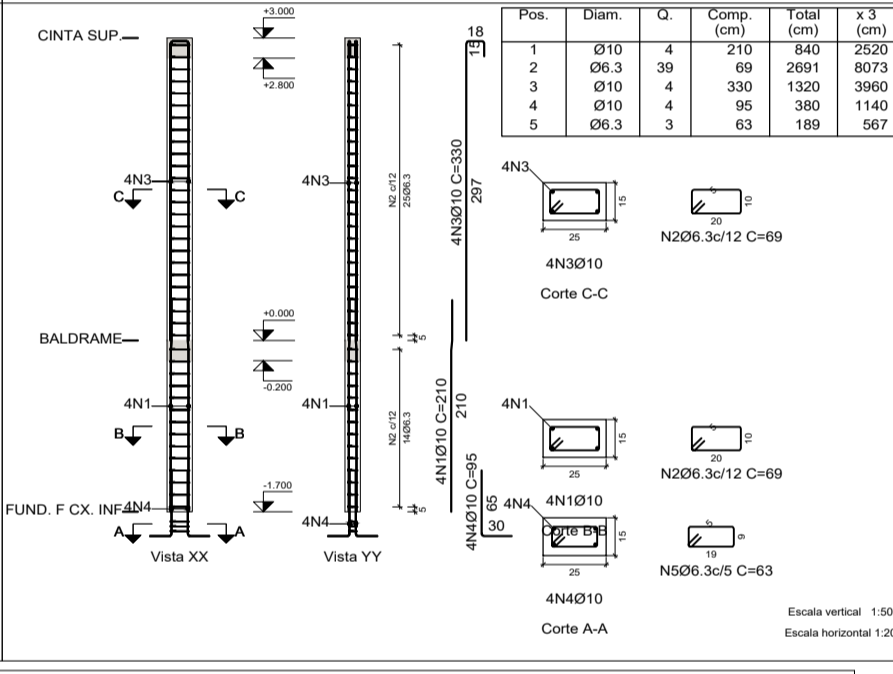
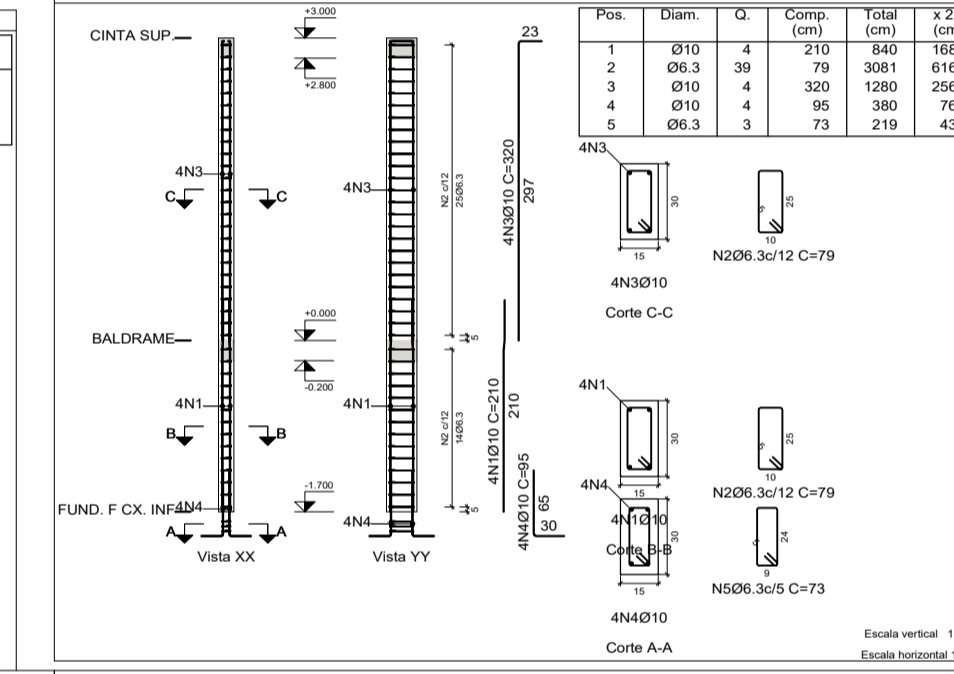
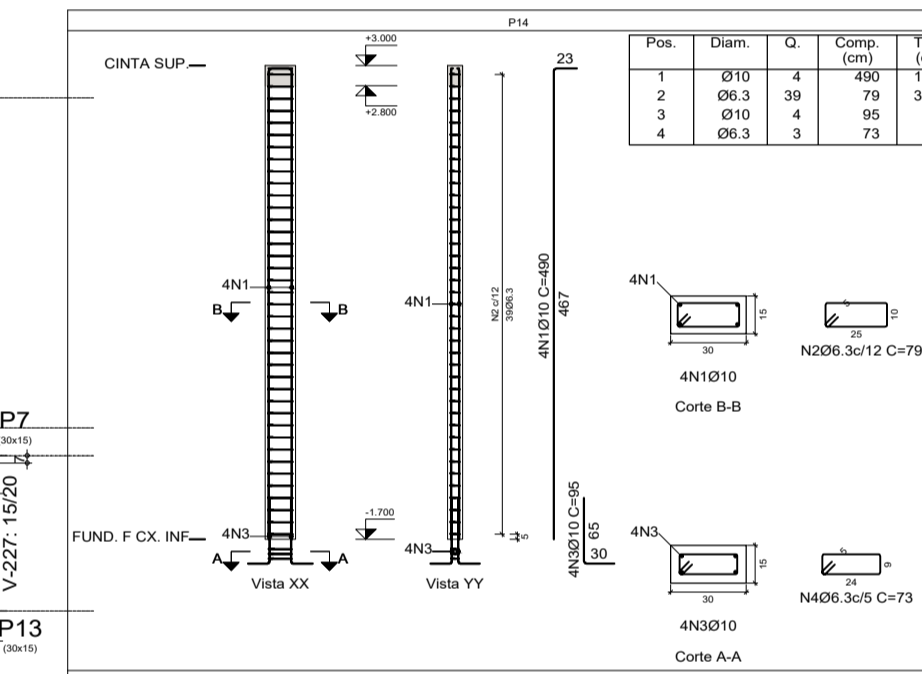


FORMA DA LAJE
REFORÇO DA LAJE EXISTENTE
 ESCALA: 1/75 (COTA: + 2.80m)



FORMA DA FUNDAÇÃO
 ESCALA: 1/75 (COTA: 0,00m)



Elemento	Pos	Diam	Q	Comp	Total	CA-50	CA-60
P17	1	Ø10	4	210	840	5.2	
P17	2	Ø6.3	60	79	4740	11.6	
P17	3	Ø10	4	410	1640	10.1	
P17	4	Ø10	4	210	840	5.2	
P17	5	Ø10	4	95	380	2.3	
P17	6	Ø6.3	3	73	219	0.5	
Total+10%: 38.4							
P18	1	Ø10	4	210	840	5.2	
P18	2	Ø6.3	61	79	4819	11.8	
P18	3	Ø10	4	410	1640	10.1	
P18	4	Ø10	4	210	840	5.2	
P18	5	Ø10	4	95	380	2.3	
P18	6	Ø6.3	3	73	219	0.5	
Total+10%: 38.6							
P19	1	Ø10	4	210	840	5.2	
P19	2	Ø6.3	60	79	4740	11.6	
P19	3	Ø10	4	410	1640	10.1	
P19	4	Ø10	4	210	840	5.2	
P19	5	Ø10	4	95	380	2.3	
P19	6	Ø6.3	3	73	219	0.5	
Total+10%: 38.4							
P20	1	Ø10	4	210	840	5.2	
P20	2	Ø6.3	36	79	3061	7.5	
P20	3	Ø10	4	320	1280	7.9	
P20	4	Ø10	4	95	380	2.3	
P20	5	Ø10	4	95	380	2.3	
P20	6	Ø6.3	3	73	219	0.5	
Total+10%: 25.7							
P21	1	Ø10	4	210	840	5.2	
P21	2	Ø6.3	61	79	4819	11.8	
P21	3	Ø10	4	410	1640	10.1	
P21	4	Ø10	4	210	840	5.2	
P21	5	Ø10	4	95	380	2.3	
P21	6	Ø6.3	3	73	219	0.5	
Total+10%: 38.6							
P22	1	Ø10	4	210	840	5.2	
P22	2	Ø6.3	39	69	2691	6.6	
P22	3	Ø10	4	330	1320	8.1	
P22	4	Ø10	4	95	380	2.3	
P22	5	Ø6.3	3	63	189	0.5	
Total+10%: 25.0							
P23	1	Ø10	4	210	840	5.2	
P23	2	Ø6.3	53	79	3061	7.5	
P23	3	Ø10	4	330	1320	8.1	
P23	4	Ø10	4	95	380	2.3	
P23	5	Ø6.3	3	63	189	0.5	
Total+10%: 34.4							
P24	1	Ø10	4	210	840	5.2	
P24	2	Ø6.3	53	79	3061	7.5	
P24	3	Ø10	4	330	1320	8.1	
P24	4	Ø10	4	95	380	2.3	
P24	5	Ø6.3	3	63	189	0.5	
Total+10%: 34.4							
P25	1	Ø10	4	210	840	5.2	
P25	2	Ø6.3	39	69	2691	6.6	
P25	3	Ø10	4	330	1320	8.1	
P25	4	Ø10	4	95	380	2.3	
P25	5	Ø6.3	3	63	189	0.5	
Total+10%: 25.0							
P26	1	Ø10	4	210	840	5.2	
P26	2	Ø6.3	39	69	2691	6.6	
P26	3	Ø10	4	330	1320	8.1	
P26	4	Ø10	4	95	380	2.3	
P26	5	Ø6.3	3	63	189	0.5	
Total+10%: 25.0							
P27	1	Ø10	4	210	840	5.2	
P27	2	Ø6.3	53	79	3061	7.5	
P27	3	Ø10	4	330	1320	8.1	
P27	4	Ø10	4	95	380	2.3	
P27	5	Ø6.3	3	63	189	0.5	
Total+10%: 34.4							
P28	1	Ø10	4	210	840	5.2	
P28	2	Ø6.3	53	79	3061	7.5	
P28	3	Ø10	4	330	1320	8.1	
P28	4	Ø10	4	95	380	2.3	
P28	5	Ø6.3	3	63	189	0.5	
Total+10%: 34.4							
P29	1	Ø10	4	210	840	5.2	
P29	2	Ø6.3	39	69	2691	6.6	
P29	3	Ø10	4	330	1320	8.1	
P29	4	Ø10	4	95	380	2.3	
P29	5	Ø6.3	3	63	189	0.5	
Total+10%: 25.0							

Elemento	Pos	Diam	Q	Dob	Ret	Dob	Comp	Total	CA-50	CA-60	
Formas	1	Ø6.3	28	10	169	10	189	5292	13.0		
Formas	2	Ø10	2	11	189	11	191	362	2.4		
Formas	3	Ø8	1	10	60	10	70	0.3			
Formas	4	Ø10	4	95	380	1140	1140	18.0			
Formas	5	Ø6.3	3	73	219	567	567	0.7			
Total+10%: 18.0											
									Ø6.3	14.3	0.0
									Ø10	1.1	0.0
									Ø10	2.6	0.0
									Total	18.0	0.0

Resumo Apo	Comp. total	Peso+10%	Total
BALDRAME Formas	52.9	14	
CA-50 Ø6.3	2.6	1	
Ø10	3.8	3	18

Resumo Apo	Comp. total	Peso+10%	Total
Pilares	1116.1	301	
CA-50 Ø6.3	851.8	677	878

DESCRIÇÃO:
 Projeto de reforma do antigo fórum para criação de um centro de inclusão e fortalecimento de vínculos e um centro de atendimento aos munícipes. Localizado na esquina da Rua João Chagas com a 2ª Travessa Enéas Vicente, Toritama-PE.

CLEYTON DA SILVA ENGENHARIA - EIRELI
 CNPJ: 27.928.441/0001-04
 CREA 598860 - PE

Cleyton da Silva
 Engenheiro Civil
 CREA 12814477 D/PE

Município de Toritama
 C.N.P.J. 11.245.054/0001-39

NATUREZA:
 Projeto estrutura concreto.

DESENHOS:
 - Planta de locação
 - Planta de forma
 - Armazém da ferragem
 - Detalhes construtivos

ÁREAS GERAIS:
 Área do terreno = 359,97 m²
 Área de solo natural = 2,75m²
 Área de solo permeável = 2,75m²
 Área de solo impermeável = 374,84m²
 Área construída = 349,64m²



ESCALA: 1/75 e 1/25
 DATA: Dezembro de 2021
 PRANCHA: 02/03